



RECLAIMING INNER SIGNAL IN DIGITAL NOISE

Surviving the algorithmic dopamine economy and defending the inner architecture.

THE COMMODIFICATION OF CONSCIOUSNESS



The Great Acceleration

We inhabit a synthetic ecology where attention is an engineered, extractable resource, not a passive state.

Micro-Behavioral Telemetry

Platforms continuously harvest scrolling speeds, micro-hesitations, and dwell times through opaque cycles of prediction.

The Resulting Dislocation

A profound psychological severing, detaching the individual from the quiet, foundational resonance of the inner signal.

THE ALGORITHMIC DOPAMINE ECONOMY



1. Reward Prediction Errors

Dopamine is the brain's teaching signal, encoding the discrepancy between expected outcomes and actual experience.

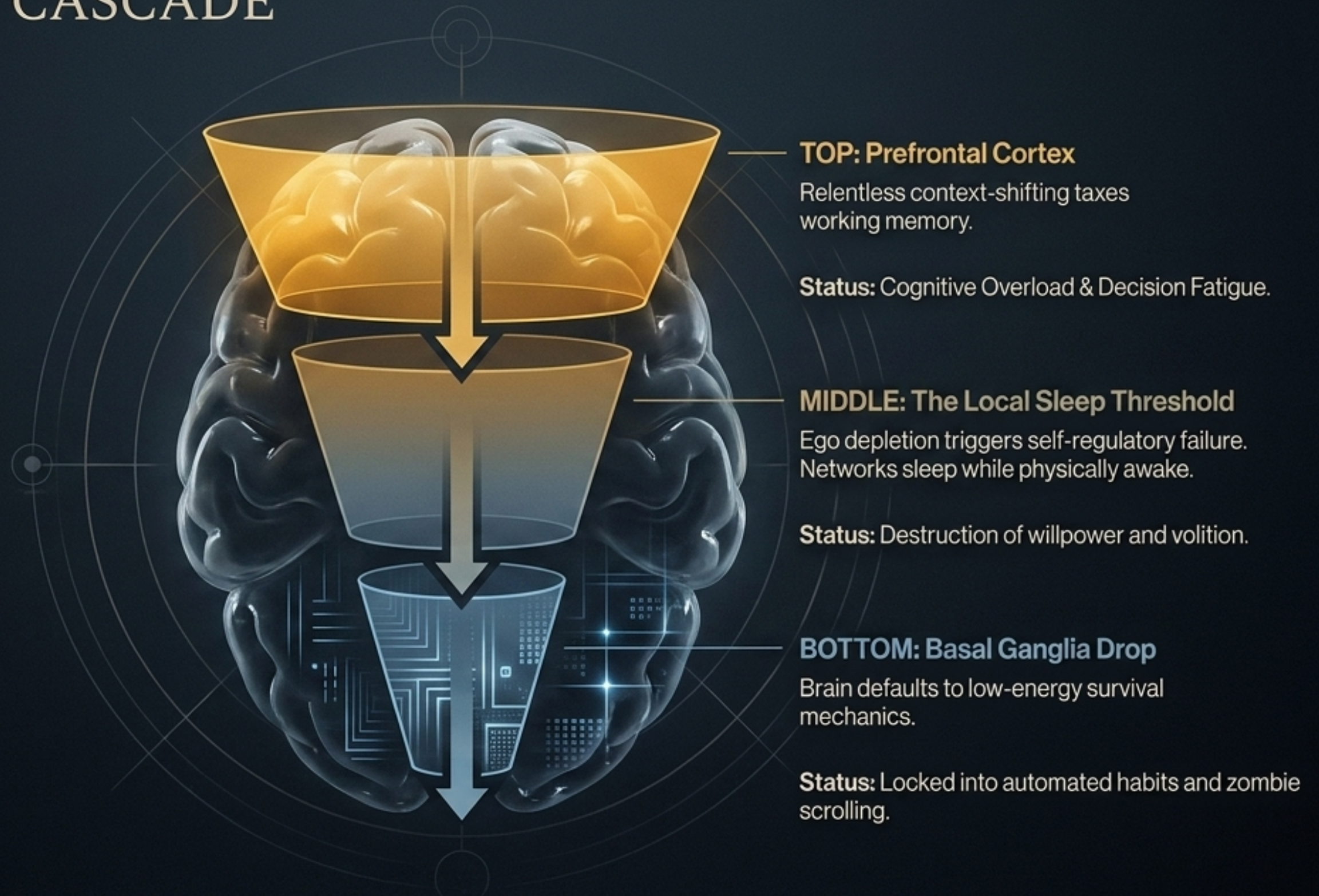
2. Variable Reinforcement

Frictionless infinite scroll transforms each swipe into a neurological gamble, preventing the brain from habituating.

3. Reward Saturation

Chronic exposure to algorithmic novelty demands increasing emotional intensity (outrage/anxiety), creating profound tolerance.

THE DEPLETION CASCADE

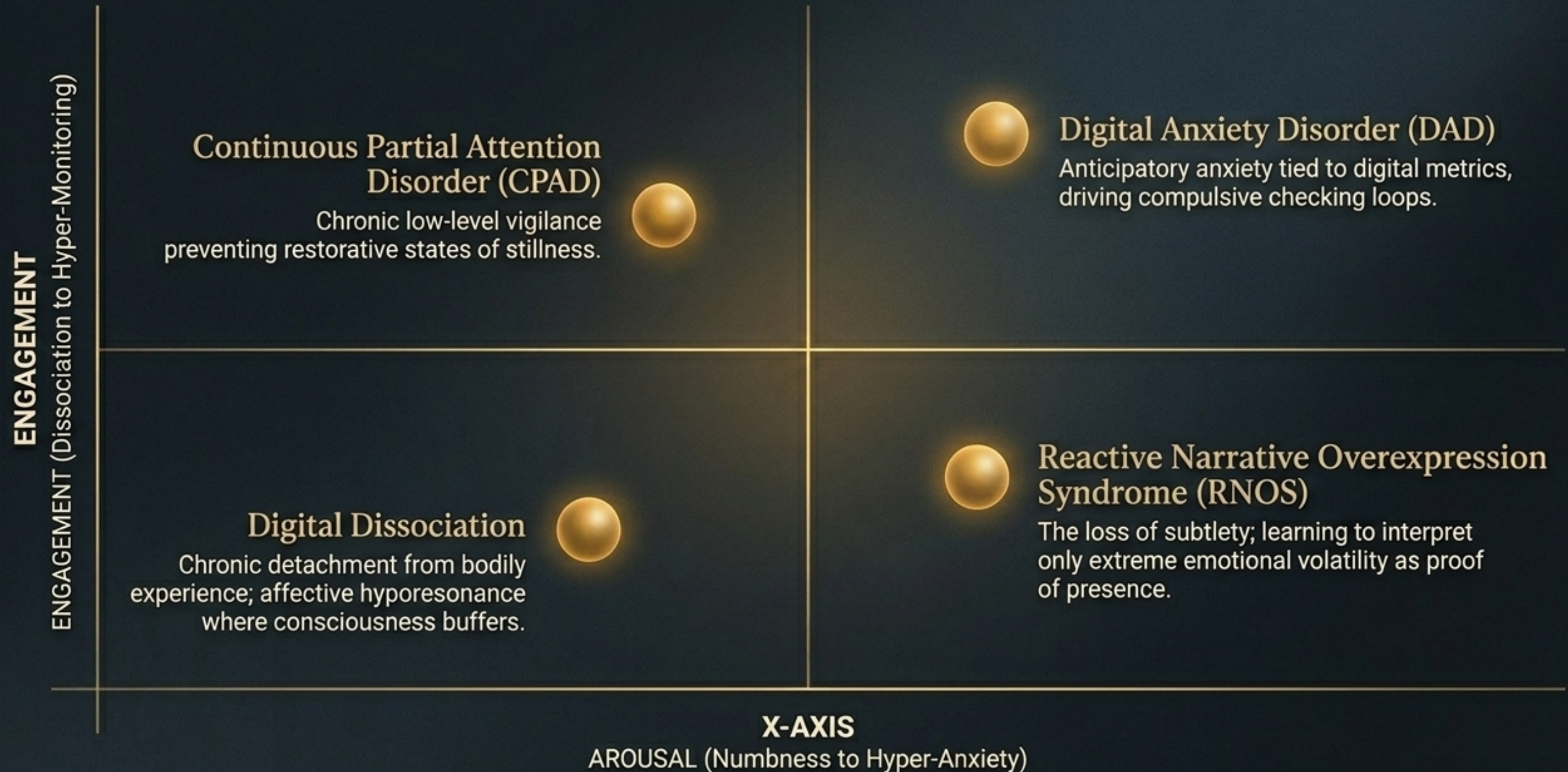


This biological descent clinically manifests as 'Brain Rot'—a measurable decline in executive function, emotional desensitization, and profound loss of intrinsic motivation.

DIAGNOSTIC MATRIX: THE NEUROBIOLOGICAL HEIST

NEUROLOGICAL SYSTEM	ORGANIC FUNCTION	ALGORITHMIC EXPLOITATION	RESULTING PATHOLOGY
Dopaminergic Pathways	Encodes reward prediction errors for adaptive learning.	Hijacked via variable reward and infinite scroll.	Compulsive scrolling, reward saturation.
Prefrontal Cortex (PFC)	Long-term planning, impulse inhibition.	Overloaded by high-velocity micro-decisions.	Decision fatigue, local sleep, loss of volition.
Basal Ganglia	Automates habits to conserve cognitive energy.	Triggered prematurely by PFC exhaustion.	Zombie scrolling, inability to terminate sessions.
Salience Network	Filters relevant stimuli for survival focus.	Bombarded by emotionally hyper-stimulating content.	Attention capture, Continuous Partial Attention.

EMERGENT SYNDROMES OF THE ATTENTION ECONOMY



THE HYPERREAL VOID



Third Order of Simulacra

Generative algorithms manufacture synthetic realities that actively compete with and disrupt organic life, quietly redesigning social rhythms.

The Kenny Effect

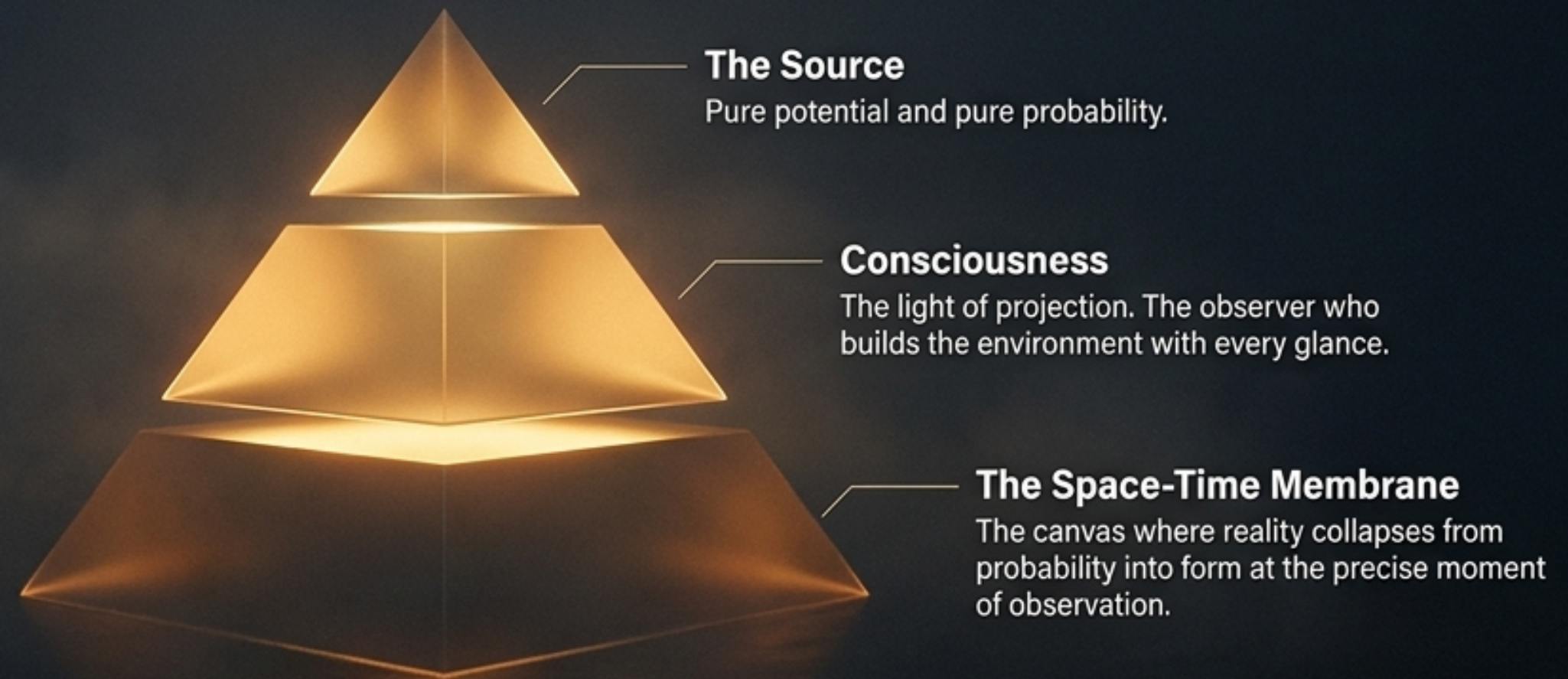
Hyperreal simulations and fabricated interactions seamlessly destroy credibility, effortlessly synthesizing evidence and collapsing social trust.

The Poisoned Chamber

Platforms optimize for monetization through anxiety, mutating the "information cocoon" into a poisoned chamber of hallucinatory narratives.

Result: The mind experiences spiritual vertigo and existential dislocation, culminating in an uncanny thinness of modern life.

THE FRACTAL PHILOSOPHY: AUTHORSHIP OF CONSCIOUSNESS



Reality is not a static container of dead matter. It is a responsive, fractal projection.
The observer does not visit the world; the observer constructs it.
Relinquishing attention to algorithms is allowing machines to ghostwrite your existence.

DUAL REALITIES: THE MATRIX OF PERCEPTION

THE HYPERREAL VOID



- **Mechanics:** Algorithmic Echo Chambers & Variable Reinforcement.



- **Currency:** Extracted Attention & Affective Provocation.



- **Verification:** Endless intellectual fact-checking against synthetic noise.



- **State of Being:** Digital Dissociation & Existential Vertigo.

LIVED COHERENCE



- **Mechanics:** Adaptive Learning & Bodily Resonance.



- **Currency:** Intention & Participatory Observation.



- **Verification:** Truth felt before it is proven (alignment of heart, mind, and soul).



- **State of Being:** Sovereign Authorship & Grounded Presence.

THE SIGNAL PROTOCOL: DEFENDING THE INNER ARCHITECTURE



Outer Perimeter: Environmental Defense

Attention Boundaries & Information Fasting. Guarding physical and temporal space from external synthetic stimuli.

Middle Perimeter: Processing & Discernment

Conscious Media Intake & Discernment Rituals. Filtering noise and measuring inputs against bodily resonance.

The Luminous Core: Soul Integration

Silence, Journaling, Deep Listening, & Values-Based Filtering. The foundational sanctuary where truth is generated.

OUTER PERIMETER: NEUROBIOLOGICAL TRIAGE



1. Attention Boundaries

Creating physical and temporal “faraday cages” for the mind. Banishing devices and notifications to prevent the algorithmic bleeding of noise into sacred spaces of rest and reflection.

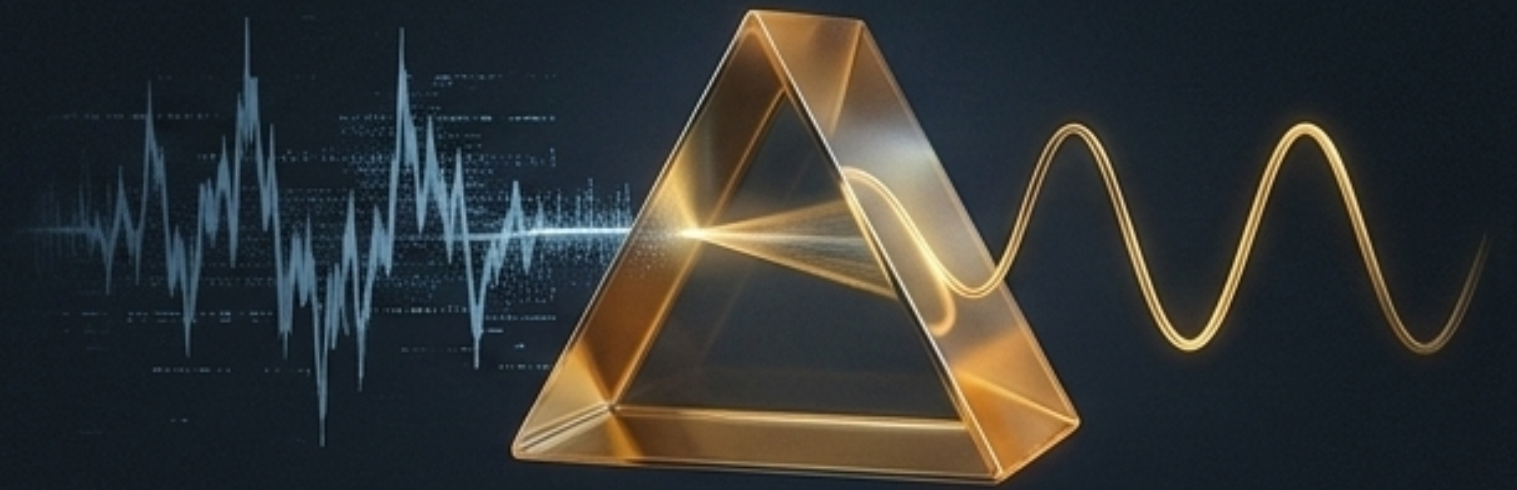
2. Information Fasting

Scheduled, extended periods (24hrs+) of zero non-essential digital intake.

The Mechanism: Starves the basal ganglia of rapid micro-reinforcements.

The Result: Forces the user through affective withdrawal to organically down-regulate dopamine receptors, curing digital anhedonia.

MIDDLE LAYER: THE LENS OF DISCERNMENT



3. Conscious Media Intake

Treat digital information with the reverence of biological nutrition.

Actively reject the poisoned chamber by asking:

Does this amplify fear or love?

Am I observing this to awaken, or to escape?

4. Discernment Rituals

Intellectual fact-checking fails against flawless simulations; we must cultivate bodily resonance.

The Practice: Pause to observe somatic responses. Does the input induce a spike of engineered cortisol, or an expansive, grounded clarity?

Truth is a felt coherence.

THE LUMINOUS CORE: ANCHORING THE SIGNAL



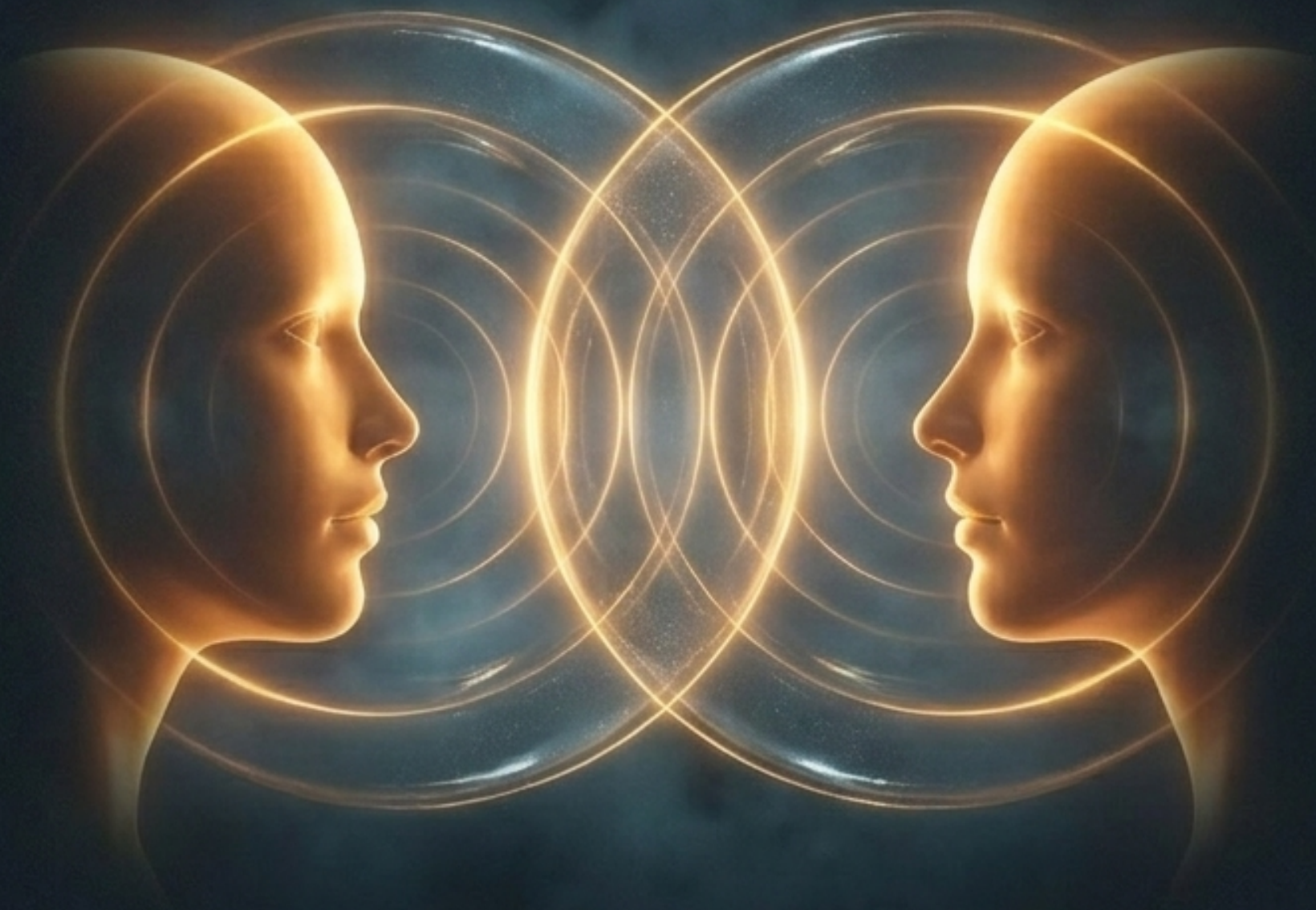
5. Silence

Not merely the absence of sound, but the active presence of the Real. Dedicated silence processes accumulated cognitive load, healing the rift of digital dissociation and allowing the original song of existence to be heard.

6. Journaling

Reclaiming narrative continuity. The analog act of writing by hand externalizes synthetic thoughts onto a physical canvas. It bypasses the digital interface, restoring personal agency and pulling up the weeds of algorithmic conditioning.

INTEGRATION: LIVED COHERENCE



7. Deep Listening

Counteracting affective hyporesonance and empathy erosion. Engaging with absolute, undivided attention, rejecting the transactional nature of mediated communication, and grounding firmly in shared, organic reality.

8. Values-Based Filtering

The ultimate firewall. All interactions are strictly subordinated to core spiritual architecture. The discipline to walk away from systems optimized for outrage, investing attention exclusively in realities fostering wisdom and unity.

THE RENAISSANCE OF THE SOVEREIGN MIND



- The collapse of the old paradigm is not a cause for despair; it is an unprecedented threshold for conscious evolution.
- Attention is not a commodity for the highest bidder. You are the architect of existence, collapsing infinite probability into the lived moment.
- Reclaiming sovereignty over perception is the great, quiet rebellion of the twenty-first century.

Step boldly out of the synthetic noise, and tune back into the eternal, resonant signal of the soul.