

FRACTAL DISORIENTATION

Collapsing Maps & Inner Coordinates in the Algorithmic Age.

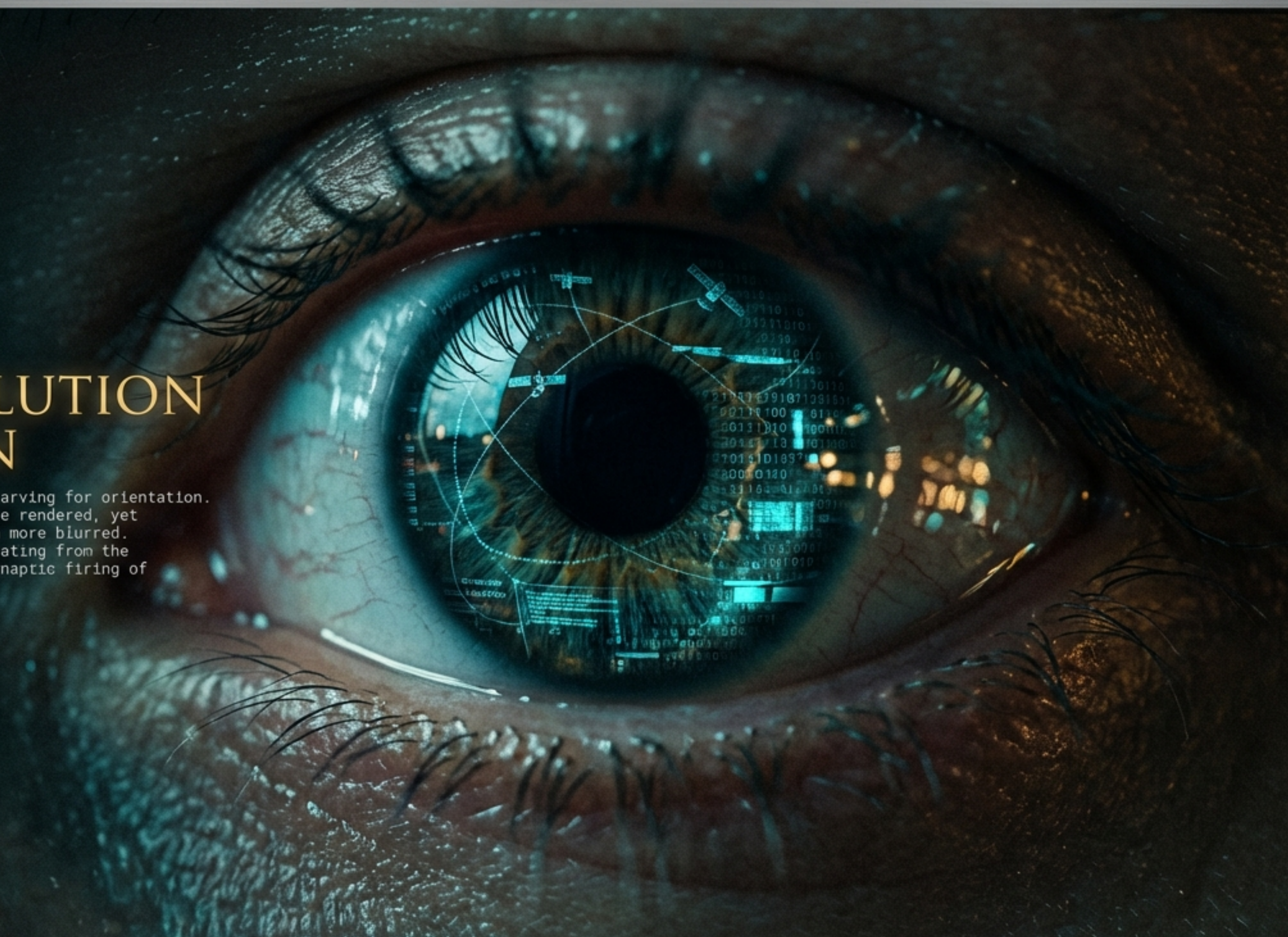


ROBOTO MONO

We map the earth to the centimeter and the genome to the letter.
Yet, the modern subject exists in a state of profound disorientation.

HIGH-RESOLUTION CONFUSION

We are drowning in coordinates but starving for orientation. The external world has never been more rendered, yet the internal landscape has never been more blurred. This is a structural collapse, replicating from the geopolitical macrocosm down to the synaptic firing of the anxious brain.



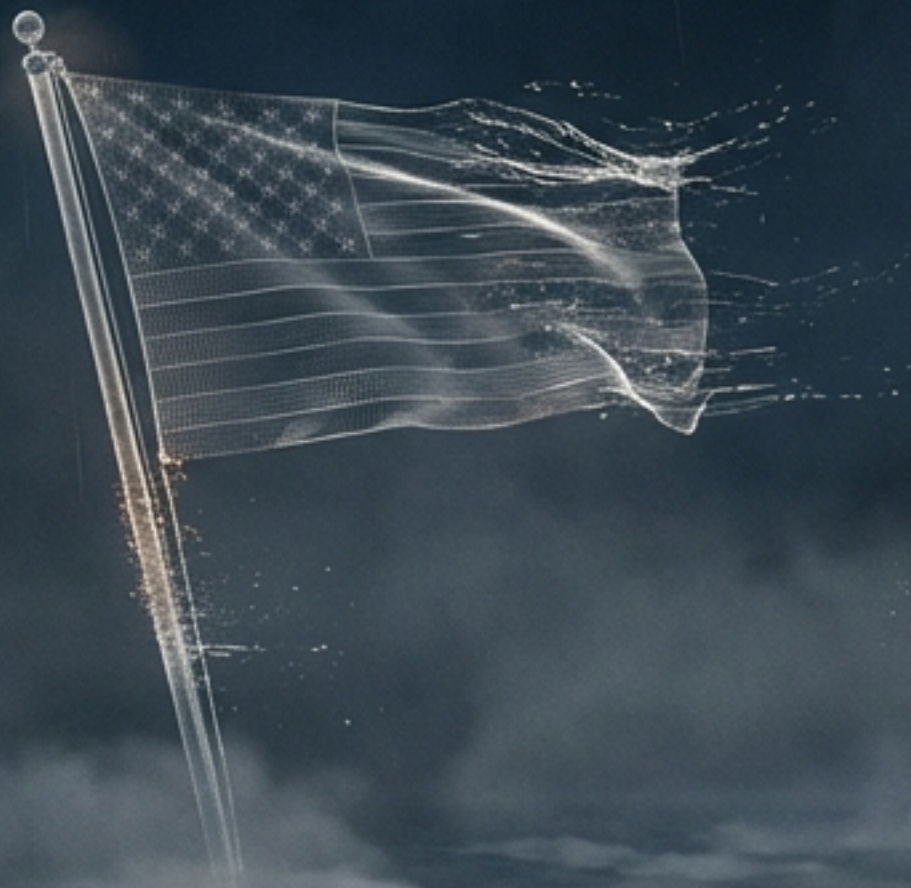
THE SACRED CANOPY HAS TORN

Identity was once a location to be inhabited.
Now, the 'Old Meaning Maps' have dissolved.



RELIGION:

The loss of the vertical coordinate. The rise of the 'Nones' and the Secular Transition Model.




NATION:

The loss of the horizontal coordinate. The 'Citizen' is replaced by the 'User.'



BIOGRAPHY:

The dissolution of the Standard Plot (Career/Family) into the instability of the Gig Economy.



LIQUID MODERNITY

Liberated from tradition, we are exposed to the vacuum of anomie. We are no longer 'authored' by history; we are fluid, drifting in a state of narrative instability. The career ladder is gone; the default script for adulthood is deleted.

THE PROMPTED SELF

We outsource identity to the feed. The 'Self' is no longer an internal reality but a feedback loop co-constructed by predictive models.

Soft Biopolitics: The algorithm infers an identity based on transient clicks, creates a label, and feeds content to reinforce it. The Lens becomes the Law.



THE ECHO CHAMBER

Replacing the 'Imagined Community' with the 'Micro-Tribe.' These are elective tribes defined by exclusion and shared grievances. They offer 'Parasocial Belonging'-a simulation of intimacy without obligation. The result is a fragile social location where one is always one post away from exile.



HYPERCHOICE PARALYSIS

The Paradox of Choice. In a world without a pre-set menu, every aspect of life must be chosen. "Decision Fatigue" and the fear of the "unlived life" freezes us. We scroll, exhausted, unable to maximize utility in an infinite menu. We are lost in a library where we cannot read a single book because we are too busy reading the titles.



THE NEURO-GLITCH

The brain is a Prediction Machine. In a chaotic digital environment, the map cannot predict the territory.
Predictive Processing Failure: When the Self-Model cannot map its relation to the volatile environment,
the result is chronic "Free Energy"—manifesting as anxiety and free-floating stress.





THE MAP IS NOT THE TERRITORY

The fundamental error: We are eating the menu instead of the meal. Information is not Orientation.
The digital map is high-resolution, but it is flat. It lacks the ontological weight of the territory.
We must stop looking at the screen and start touching the earth.

REMEMBRANCE OVER INVENTION

Stop trying to invent a new self to fit the chaos. Invention is a fragile function of the ego. Remembrance is the return to the 'Witness' consciousness—the observer that stands behind the digital avatars. The external chaos is merely a projection of internal fragmentation.



INVENTION (EGO)



REMEMBRANCE (WITNESS)

ATTENTION & VALUES

COORDINATE I & II

ATTENTION:
The Currency of the Soul.

Sovereignty over where
you look.

Focus is a portal—where
you look is where you go.



VALUES:
The Code of the Future.

Values are heuristics
that reduce decision

fatigue.

Build for the world you
want to live in.

EMBODIMENT & COHERENCE

COORDINATE III & IV

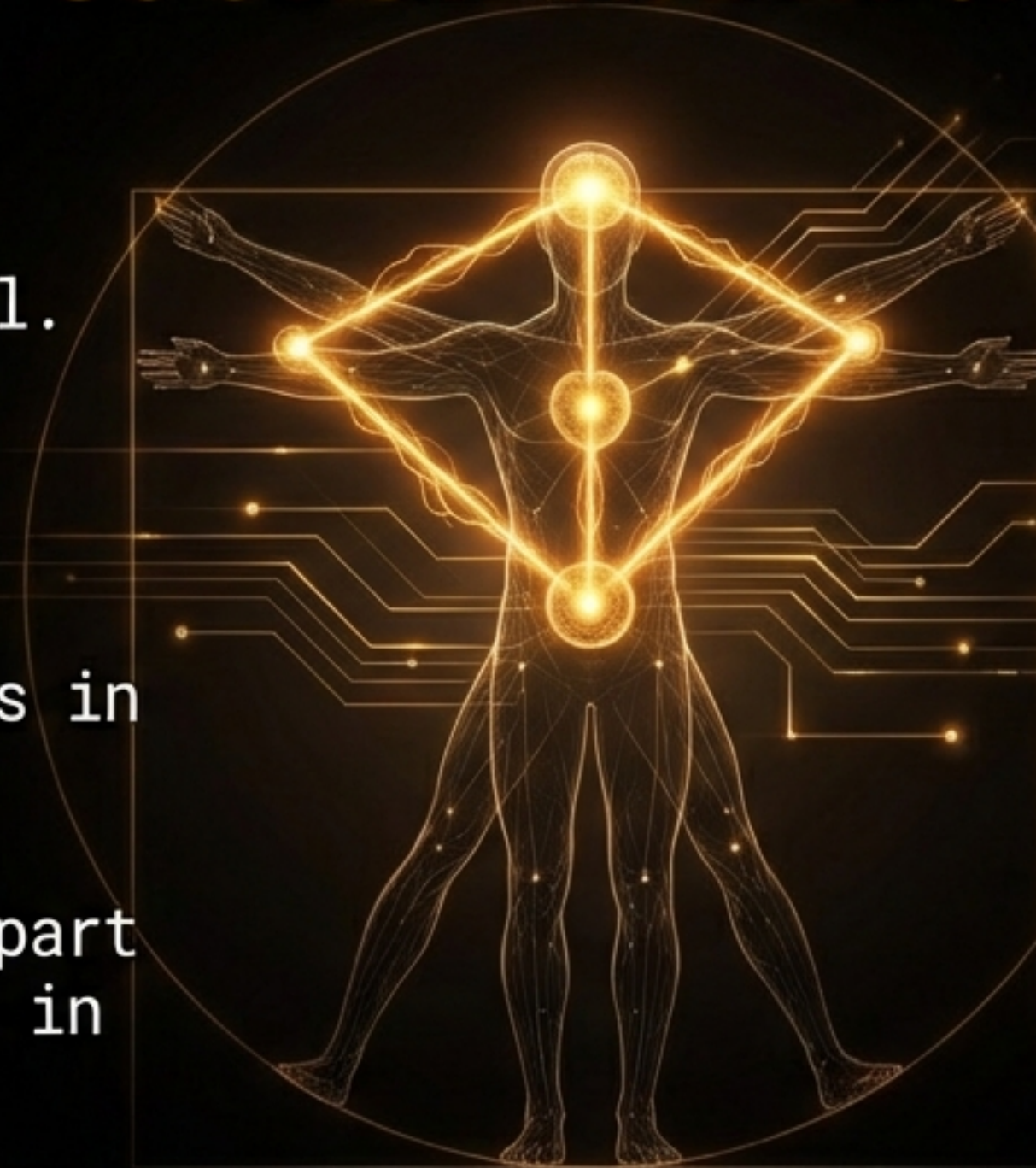
EMBODIMENT:

The Body is the Portal.

The digital world is disembodied.

Re-orientation happens in the nervous system.

The body is the only part of you that is always in the Territory.



COHERENCE:

The Alignment of Reality.

The synchronization of thought, feeling, and action.

Eliminating the 'interference patterns' of a fragmented self.

SERVICE COORDINATE V

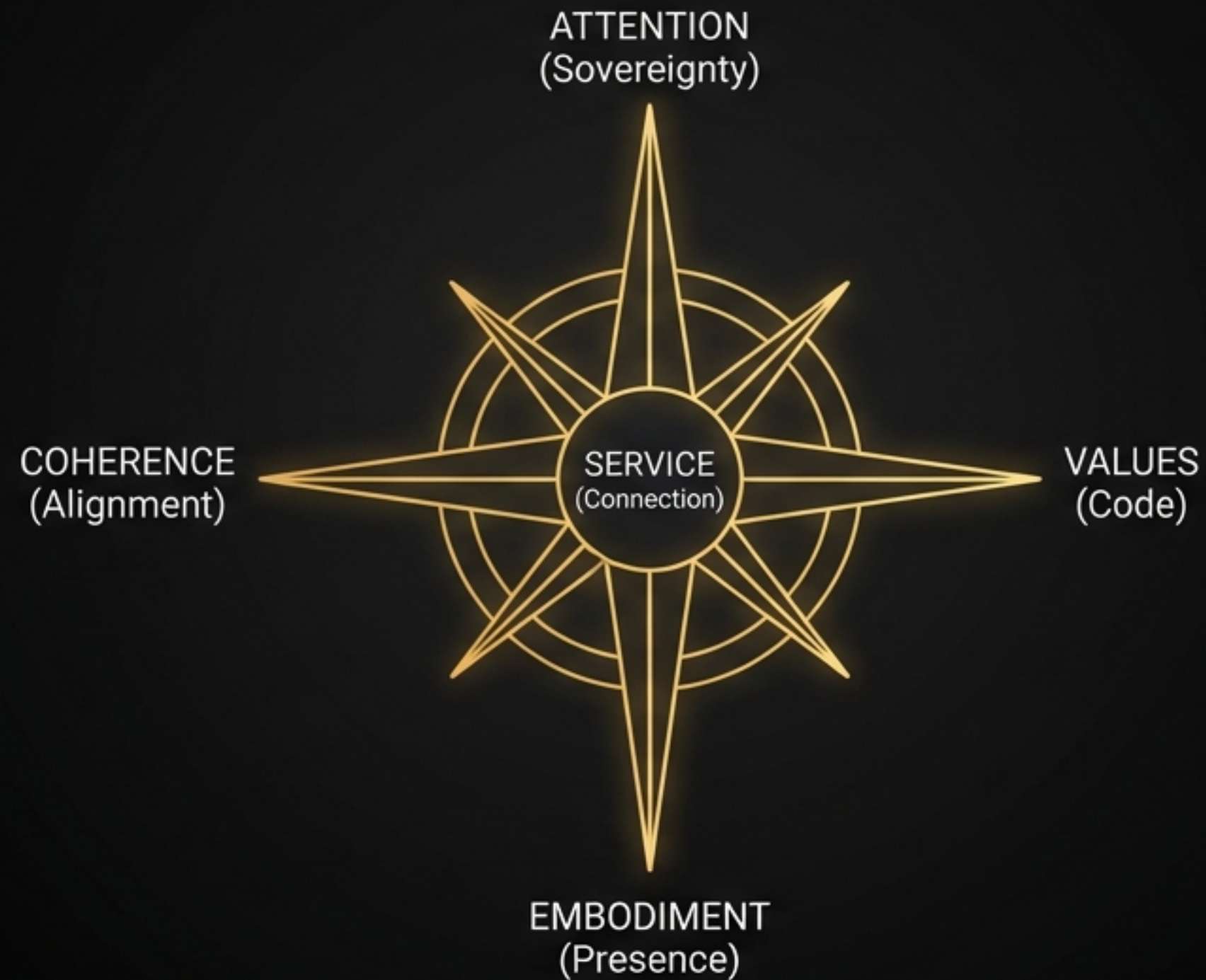
The Stabilizing Force.

Navel-gazing leads to vertigo; service grounds you in the 'Other.'

Moving from 'What can I get?' to 'What can I give?' re-establishes the web of interdependence that cures anomie.



THE NEW INNER ARCHITECTURE



A person is walking across a city street at sunset. The sun is low on the horizon, creating a strong silhouette of the person and casting a warm, golden glow across the wet pavement and the facades of the tall buildings lining the street. The perspective is looking down the length of the street, with the buildings receding into the distance.

LOST IN INFORMATION. FOUND IN COHERENCE.

We do not need a better GPS. We need to calibrate the inner compass. The map is dead. Long live the territory.

WWW.FRACTALTHETRILOGY.COM

