


WWW.FRACTALTHETRILOGY.COM



A glowing, ethereal figure in a meditative pose, surrounded by complex geometric patterns and a starry background. The figure is composed of fine white lines and is centered within a large, intricate mandala-like structure. The background is a deep blue with scattered white stars and soft, glowing light trails.

PARALLEL LIVES

The Science and Spirituality of Multidimensional Identity



The Fortress of the Singular Self is Fracturing.

For millennia, we've defined ourselves as a unitary subject on a linear path. This monolithic view is fracturing under the combined weight of quantum mechanics, depth psychology, and ancient wisdom.

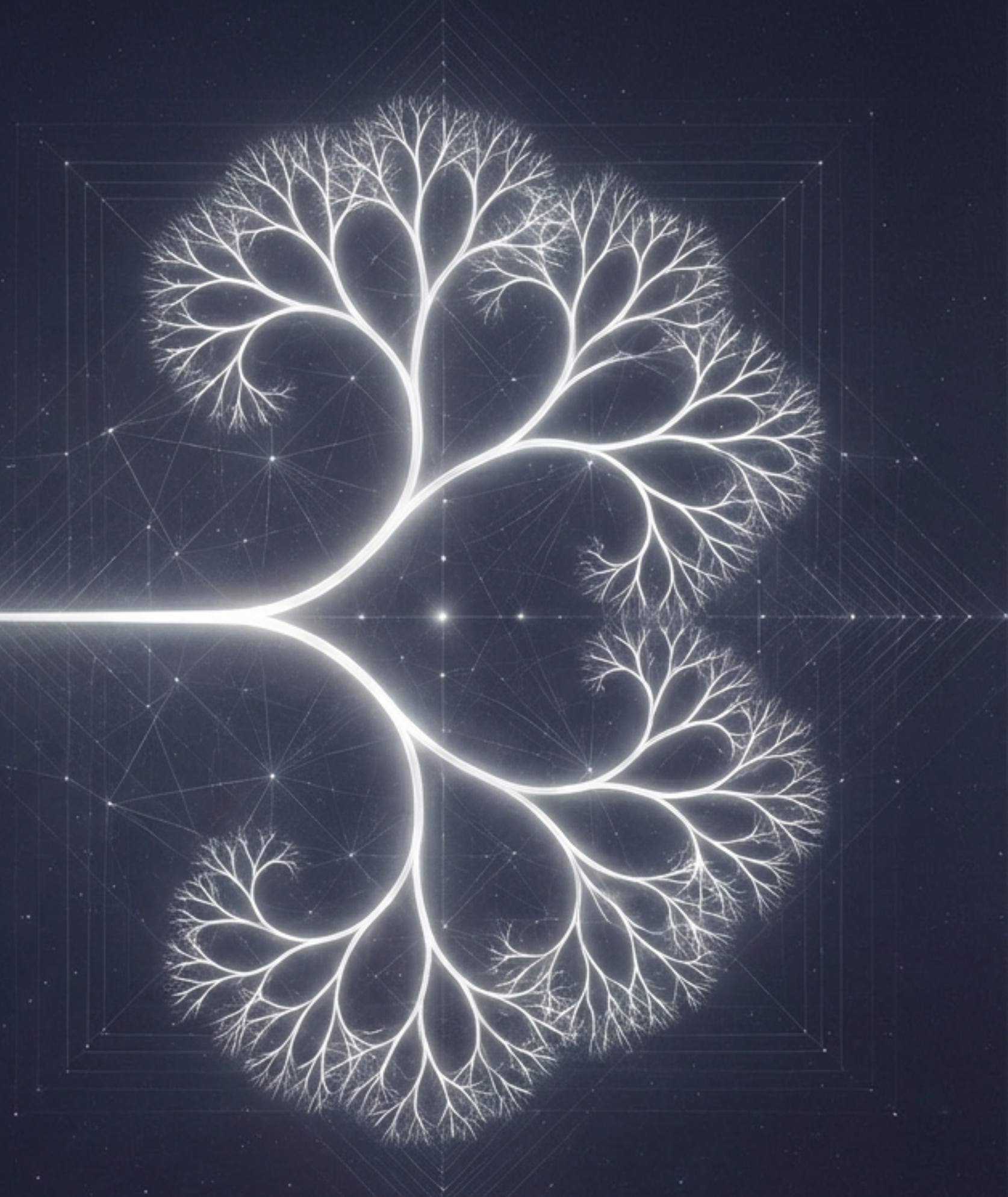
We are moving from a singular 'I' to a distributed, multidimensional 'Self'

The fundamental question is no longer 'Who am I?' but '**What** am I?'

The Quantum Revelation: Reality is a Branching Tree.

In 1957, Hugh Everett III proposed a radical solution to quantum weirdness: the wave function never collapses. Instead, every quantum event splits the universe into non-interacting branches.

There is not one 'you.' There is a colony of 'yous' living out every possible outcome on infinite, parallel timelines. Identity is not a thread; it is a vast, ever-growing tree.



The Psyche as a Parliament of Selves

Psychology maps a 'multiverse within.' Carl Jung's **Archetypes** are autonomous personalities in the unconscious (the Shadow, the Hero). Internal Family Systems (IFS) reveals a system of "parts"—**Exiles** holding trauma, **Managers** protecting us, and a core, undamaged **Self** that can lead them all. We are not one voice, but a choir.



Ancient Wisdom Maps a Layered Reality.



Kabbalah: Describes five levels of the soul, from the physical *Nefesh* to the divine *Yechida*.

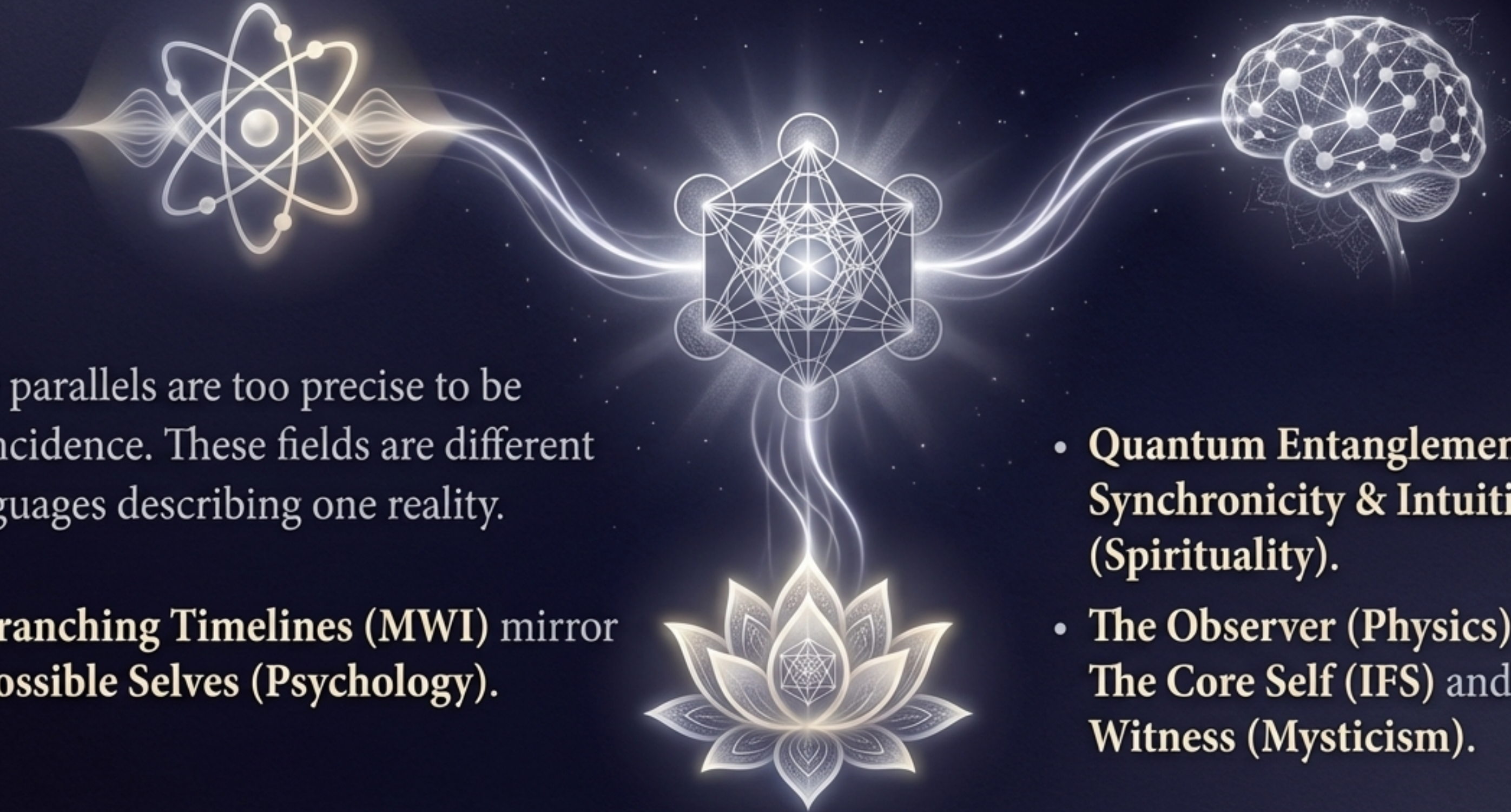


Buddhism: Posits the *Trikaya*, three bodies of being from the physical *Nirmāṇakāya* to the formless *Dharmakāya*.



Shamanism: Navigates the Lower, Middle, and Upper worlds to retrieve fragmented soul parts.

A Great Symmetry: The Quantum, the Psyche, and the Soul Converge.



The parallels are too precise to be coincidence. These fields are different languages describing one reality.

- **Branching Timelines (MWI)** mirror **Possible Selves (Psychology)**.

- **Quantum Entanglement** mirrors **Synchronicity & Intuition (Spirituality)**.
- **The Observer (Physics)** mirrors **The Core Self (IFS)** and **The Witness (Mysticism)**.

‘The mountain isn’t just Kailash. It’s the projection
of our own awakening.’ – *Fractal: The Awakening*



Contemporary narratives provide a new mythology for this worldview. *Fractal* explores an identity stretched across timelines. *The Oracle 2.0* provides the codex: ‘Identity is Awareness,’ ‘Information creates itself,’ and ‘Presence Bends the World.’ These are not fantasies, but symbolic representations of a deeper truth.

The Observer is the Architect of the Cosmos.

The common thread is the power of observation. Physics shows observation collapses probability into actuality. Psychology shows attention energizes possible selves and future timelines. Spirituality teaches that consciousness is the creative ground of being. We are not merely watching the play of life; we are co-writing it through the focus of our awareness.



As Above, So Below. The Self is a Fractal of the Universe.

The ultimate metaphor **is** the **fractal**: a self-similar pattern repeating at every scale. You are not a separate piece **in** the universe; you are a holographic **reflection of** the universe. Your **inner** world contains the map to the **outer** cosmos. To integrate your **inner parts** is to participate in the **healing of the whole**.



Practical Mastery: Convene the Council of Your Selves.

Use this knowledge for any major decision. In a quiet state, visualize a council table and invite the wisdom of your multidimensional identity:

- Your **Future Self** who has already navigated this.
- Your **Wise Elder Self** connected to timeless truth.
- Your **Fearless Child Self** who remembers pure potential.

Listen to their perspectives.



Tools for Navigating Your Inner Multiverse



Perspective Journaling

Write from the voice of your **Shadow**, then your **Highest Self**, to integrate fragmented layers.



Quantum Jumping

Feel into the reality of a **'you'** who has already achieved your goal. Borrow that frequency and bring it into your present.



The **"Who Am I?"** Inquiry

Peel away all labels (job, thoughts, roles) until you rest in the silent, observing **Awareness**.

You Are Not a Point on a Line. You Are the Entire Field of Possibility.

The journey reveals that the search for the self leads to a stunning realization: there is no single, fixed self to find. There is only the infinite, creative field of Awareness, expressing itself through a fractal of countless lives, timelines, and potentials.

The multiverse is not “out there.” It is the very nature of your being.



Continue the Journey.

This presentation is a map, not the territory.
To explore further:

- Multidimensional Identity Research Foundation
 - Fractal – The Awakening*
 - The Oracle 2.0*
-

Frequently Asked Questions

Is the multidimensional self real?

While scientifically theoretical (Many Worlds Interpretation) and psychologically metaphorical (IFS), the concept provides a robust framework for understanding the complexity of human consciousness.

How can I connect with my parallel selves?

Techniques like Jungian Active Imagination, 'Best Possible Self' visualization, and deep meditation can help you access the wisdom of your latent or potential identities.

What is the difference between the soul and the self?

The 'self' is the constructed ego navigating a specific timeline. The 'soul' or 'Awareness' is the non-local observer that exists across all dimensions and timelines.

Does quantum physics prove spirituality?

It dismantles a purely materialist worldview. Concepts like entanglement, non-locality, and the observer effect offer strong scientific parallels to spiritual truths about unity and the power of consciousness.